

AUTOMATE YOUR PROCESSES

Includes extended versions of the functionality of Collect, plus:

- Multi-zone
- End of Line (EOL) Workflow
- Kitting
- Advanced Allocation
- Advanced Lot/Serial Number Tracking
- Advance Replenishment
- Returns
- Enhanced Putaway

With optional modules, including:

- License Plates
- Cartonization
- Repackaging
- Advanced Receiving
- Delivery Building

Warehouse: Fulfill Edition for SL

EMPOWERING THE WAREHOUSE

A recent Aberdeen Research study shows that improving the speed and accuracy of the fulfillment process and reducing the cost of labor are the key issues that businesses like yours face in the warehouse.

To gain control over these issues requires technology that optimizes the utilization of your people and your assets. More than an automated data collection system that simply extends the paper processes leveraged from within your ERP solution.

You're looking for the system to do more so that you can leverage your workforce more effectively. So that you can maximize service levels while minimizing inventory. Find ways to optimize your transportation costs in this time of rising fuel costs and driver scarcity.

And, accomplish this while not increasing your IT infrastructure!

Accellos can help. We've built our Fulfill Edition to empower you to automate your warehouse using tools like conveyers, carousels, sophisticated picking algorithms, advance replenishment methods and order allocation. Delivered in a simple, intuitive solution that can be implemented quickly and efficiently.



“Top performers have already built-out their inventory control and order picking processes, and are now turning to innovations in put-away, replenishment, and returns processing to stand-out above the competition.”

*Ian Hobkirk
Aberdeen Research*

TIGHTEN CONTROL

Accellos One provides you with the tools to maintain better inventory accuracy minimizing writedowns and writeoffs. To insure compliance with your customers labeling requirements. Improve your control in these and many more key areas of your business

MAXIMIZE EFFICIENCY

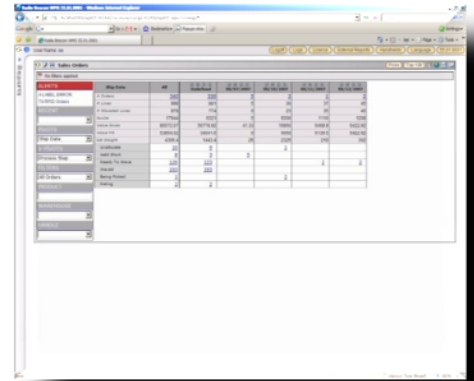
Leverage our advanced processes to improve your picking and receiving functions. To eliminate manual order checking. These are just a few areas where Accellos One helps your team gain efficiency and effectiveness.

IMPROVE VISIBILITY

Accellos One's web-centric design gives you the ability to allow internal and external users visibility into the status of warehouse operations. Providing visibility creates competitive differentiation for your business that drives ROI.

Beyond Pick and Pack

Look for efficiencies throughout your processes. Need to receive full containers? Fulfill can help. Expanding your operation to multiple warehouses? Gain full multi-warehouse visibility with Fulfill. Establish event monitors on key processes that enable Fulfill to alert you to any issues that may need your attention. Integrate with the leading suppliers of warehouse automation equipment, such as Pick Lights, Conveyors, Vertical and Horizontal Carousels. Leverage your network of trading partners with EDI integration and an available customer portal. All managed by a web centric wave planning console.



Why Accellos One?

Seamlessly integrated with Microsoft Dynamics SL, the Fulfill Edition can be scaled to fit the logistic needs of any small to mid-sized warehouse operation.

And, Accellos offers a premier suite of supply chain execution solutions enabling you to fulfill all of your needs from a single source.

Solutions for:

- Third party logistics (3PL)
- Transportation management
- Mobile resource management
- Business intelligence

SERVICES AVAILABLE

Technical Support
Installation and Setup
Maintenance
Application Support
Hardware Support
Managed Services
Hosting

Accellos

90 S. Cascade, Suite 1200
Colorado Springs, CO 80903
719.433.7000 ph
719.433.7038 fax
www.accellos.com